

ERSATZTEILLISTE
PARTS LIST
LISTA DE RECAMBIOS
LISTE DE PIECE DE
RECHANGE



Art.Nr.:5056149005

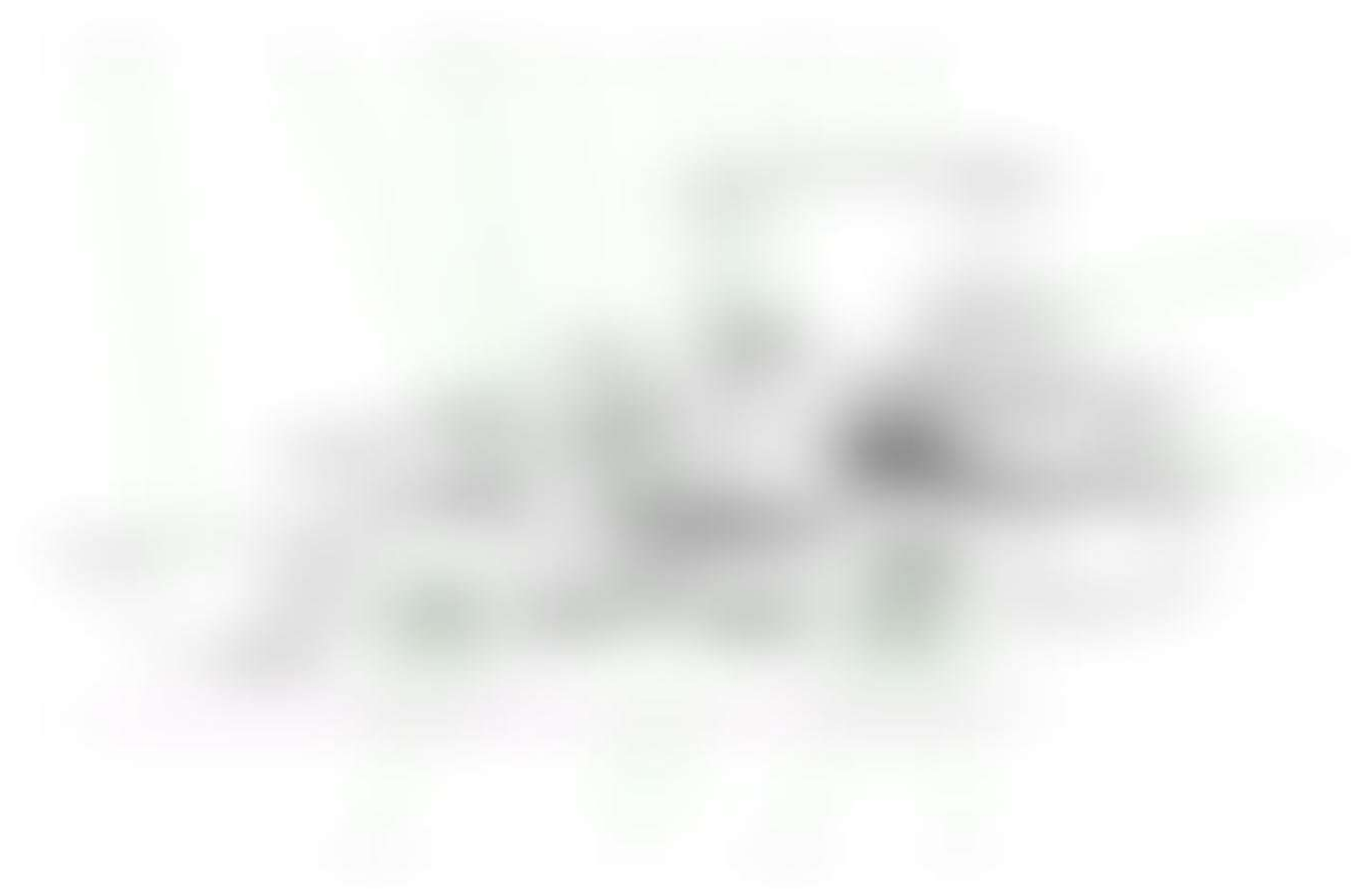
Weidemann GmbH & Co. KG



ET Liste 1490 P50	1
Inhalt Ersatzteilliste 1490 P50 Content Spare parts list 1490 P50 Contenu Liste de pièces de rechange 1490 P50 Conten. Lista piezas recambio 1490 P50	8
Servicesatz Service kit Trousse de service Kit de servicio	12
Vorder und Hinterwagen Car front and rear Avant et arrière de l'automobile Auto, delant. y trasera	14
Mittelgelenk Central link Lien central Enlace central	18
Trittplatte Step board Marchepied Estribo	20
Trittplatte T-Modell Step board T-Modell Marchepied T-Modell Estribo T-Modell	24
Fahrerschutzdach Safety roof driver Circuit d'attaque du toit de sécurité Techo de seguridad conductor	28
Motorhaube Bonnet Bonnet Capó.....	30
Dämmatten Silencing foam Mousse insonorisante Espuma silenciadora.....	34

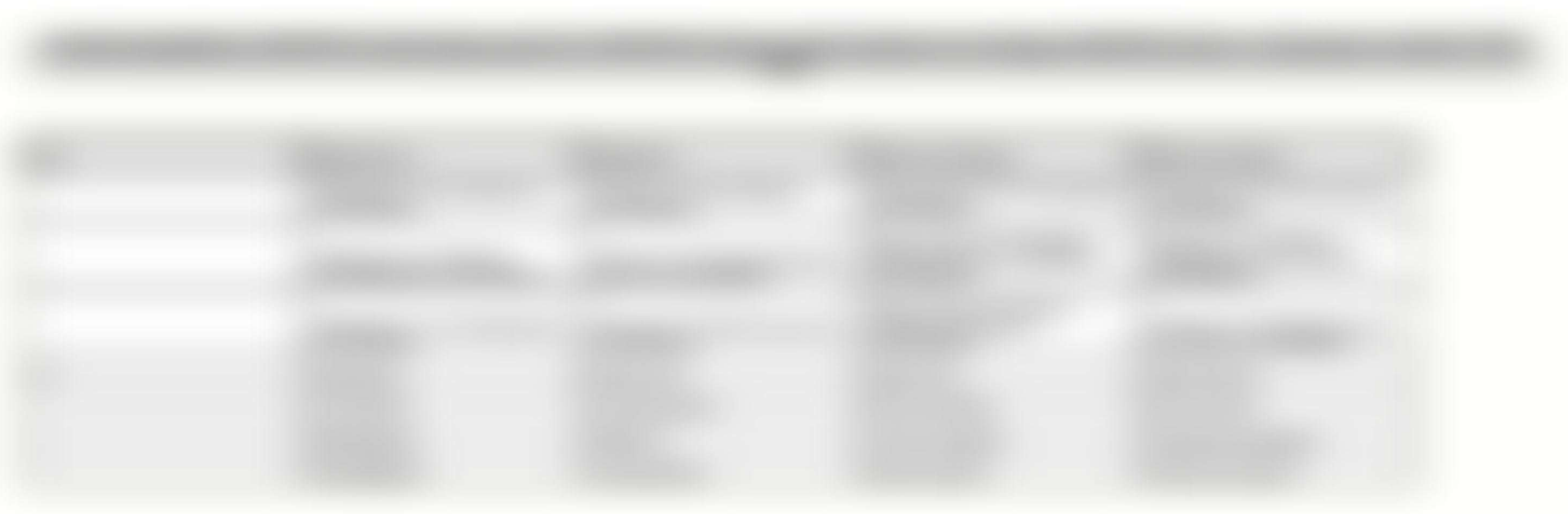
Bremsanlage PA-Achse Brake system PA Axle Système de freinage essieu PA Sistema de frenos Eje PA	108
Bremsanlage PA-Achse T-Modell Brake system PA Axle T-Modell Système de freinage essieu PA T-Modell Sistema de frenos Eje PA T-Modell	112
Vorderachse S106 Front axle S106 Essieu avant S106 Eje frontal S106.....	116
Hinterachse S106 Rear axle S106 Essieu arrière S106 Eje trasero S106.....	120
Vorderachse -ZF Bremse (4472004091/087) Front axle -ZF Brake (4472004091/087) Essieu avant -ZF Frein (4472004091/087) Eje frontal - ZF Freno (4472004091/087)	124
Vorderachse -ZF Antrieb-Differential (4472004091) Front axle -ZF Drive -Differential (4472004091) Essieu avant -ZF Entraînement -Différentiel (4472004091) Eje frontal -ZF Transmisión- Diferencial (4472004091)	128
Vorderachse -ZF -Ausgleichkorb-Differential (4472004091) Front axle -ZF Drive -Differential (4472004091) Essieu avant -ZF Entraînement -Différentiel (4472004091) Eje frontal -ZF Transmisión- Diferencial (4472004091)	132
Vorderachse -ZF Achsbrücke A (4472004091) Front axle -ZF Axle bridge A (4472004091) Essieu avant ECO -ZF Pont d'essieu A (4472004091) Eje frontal -ZF Puente del eje A (4472004091)	136
Vorderachse -ZF Achsbrücke B (4472004091) Front axle -ZF Axle bridge B (4472004091) Essieu avant ECO -ZF Pont d'essieu B (4472004091) Eje frontal -ZF Puente del eje B (4472004091)	142
Vorder-Hinterachse -ZF Abtrieb (4472004091/95/96) Front - Rear axle -ZF drive output (4472004091) Essieu avant - arrière -ZF entraînement de sortie (4472004091) Frente - Eje trasero -ZF salida de transmisión (4472004091)	144

Hinterachse -ZF -Ausgleichkorb-Differential (4472004092)	
Rear axle -ZF Drive -Differential (4472004092)	
Essieu arrière -ZF Entraînement -Différentiel (4472004092)	
Eje trasero -ZF Transmisión -Diferencial (4472004092)	148
Hinterachse -ZF Achsbrücke A (4472004092)	
Rear axle -ZF Axle bridge A (4472004092)	
Essieu arrière -ZF Pont d'essieu A (4472004092)	
Eje trasero -ZF Puente del eje A (4472004092)	152
Hinterachse -ZF Achsbrücke B (4472004092)	
Rear axle -ZF Axle bridge B (4472004092)	
Essieu arrière -ZF Pont d'essieu B (4472004092)	
Eje trasero -ZF Puente del eje B (4472004092)	158
Hinterachse -ZF Gehäuse Verteilergetriebe (4472004092/089)	
Rear axle -ZF Housing Distributor gear box (4472004092/089)	
Essieu arrière -ZF Enveloppe Boîte de vitesse du distributeur (4472004092/089)	
Eje trasero -ZF Carcasa Distribuidor caja de cambios (4472004092/089)	160
Hinterachse -ZF Verteilergetriebe (4472004092/089)	
Rear axle -ZF Distributor gear box (4472004092/089)	
Essieu arrière -ZF Boîte de vitesse du distributeur (4472004092/089)	
Eje trasero -ZF Distribuidor caja de cambios (4472004092/089)	162
Erdschaufel	
Earth shovel	
Pelle à terre	
Pala de tractor	164
Uni-Schaufel	
Universal shovel	
Pelle universelle	
Pala universal	166
Palettengabel	
Pallet fork	
Fourche à palette	
Horquilla para paletas	170





Item	Quantity	Unit	Material	Remarks
1	1	kg	Steel	
2	2	kg	Steel	
3	3	kg	Steel	
4	4	kg	Steel	
5	5	kg	Steel	
6	6	kg	Steel	
7	7	kg	Steel	
8	8	kg	Steel	
9	9	kg	Steel	
10	10	kg	Steel	
11	11	kg	Steel	
12	12	kg	Steel	
13	13	kg	Steel	
14	14	kg	Steel	
15	15	kg	Steel	
16	16	kg	Steel	
17	17	kg	Steel	
18	18	kg	Steel	
19	19	kg	Steel	
20	20	kg	Steel	
21	21	kg	Steel	
22	22	kg	Steel	
23	23	kg	Steel	
24	24	kg	Steel	
25	25	kg	Steel	
26	26	kg	Steel	
27	27	kg	Steel	
28	28	kg	Steel	
29	29	kg	Steel	
30	30	kg	Steel	
31	31	kg	Steel	
32	32	kg	Steel	
33	33	kg	Steel	
34	34	kg	Steel	
35	35	kg	Steel	
36	36	kg	Steel	
37	37	kg	Steel	
38	38	kg	Steel	
39	39	kg	Steel	
40	40	kg	Steel	
41	41	kg	Steel	
42	42	kg	Steel	
43	43	kg	Steel	
44	44	kg	Steel	
45	45	kg	Steel	
46	46	kg	Steel	
47	47	kg	Steel	
48	48	kg	Steel	
49	49	kg	Steel	
50	50	kg	Steel	
51	51	kg	Steel	
52	52	kg	Steel	
53	53	kg	Steel	
54	54	kg	Steel	
55	55	kg	Steel	
56	56	kg	Steel	
57	57	kg	Steel	
58	58	kg	Steel	
59	59	kg	Steel	
60	60	kg	Steel	
61	61	kg	Steel	
62	62	kg	Steel	
63	63	kg	Steel	
64	64	kg	Steel	
65	65	kg	Steel	
66	66	kg	Steel	
67	67	kg	Steel	
68	68	kg	Steel	
69	69	kg	Steel	
70	70	kg	Steel	
71	71	kg	Steel	
72	72	kg	Steel	
73	73	kg	Steel	
74	74	kg	Steel	
75	75	kg	Steel	
76	76	kg	Steel	
77	77	kg	Steel	
78	78	kg	Steel	
79	79	kg	Steel	
80	80	kg	Steel	
81	81	kg	Steel	
82	82	kg	Steel	
83	83	kg	Steel	
84	84	kg	Steel	
85	85	kg	Steel	
86	86	kg	Steel	
87	87	kg	Steel	
88	88	kg	Steel	
89	89	kg	Steel	
90	90	kg	Steel	
91	91	kg	Steel	
92	92	kg	Steel	
93	93	kg	Steel	
94	94	kg	Steel	
95	95	kg	Steel	
96	96	kg	Steel	
97	97	kg	Steel	
98	98	kg	Steel	
99	99	kg	Steel	
100	100	kg	Steel	

























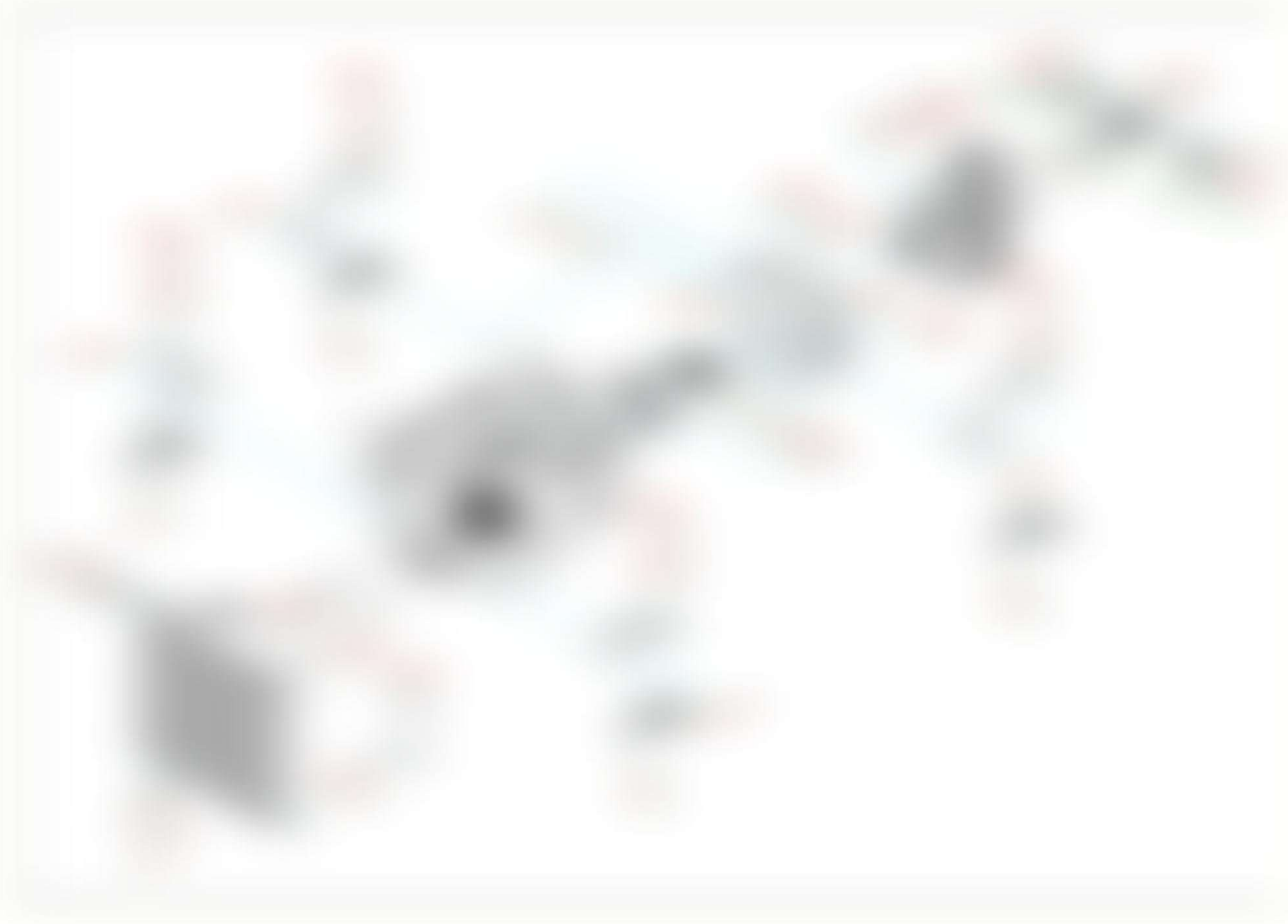




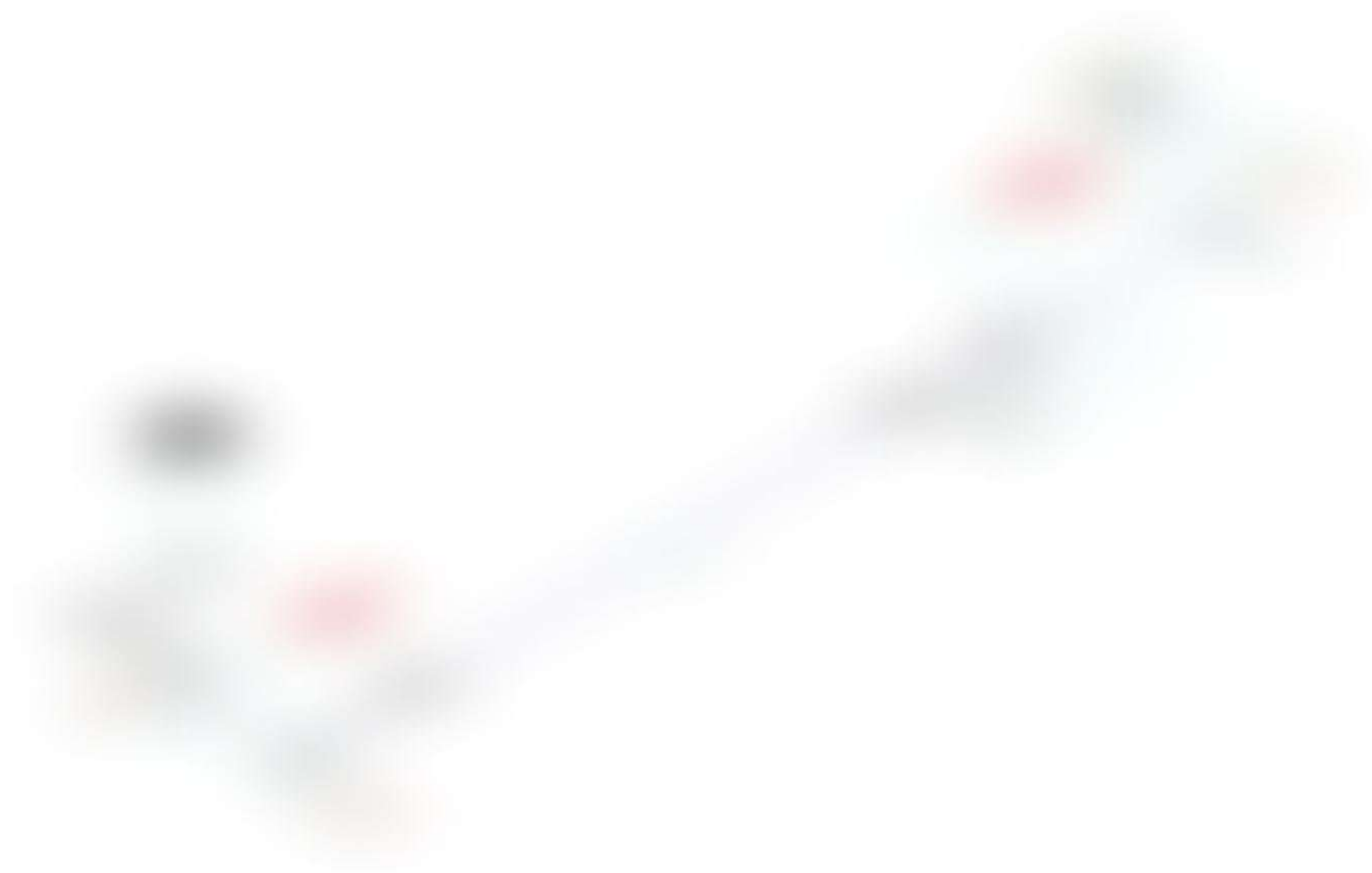
















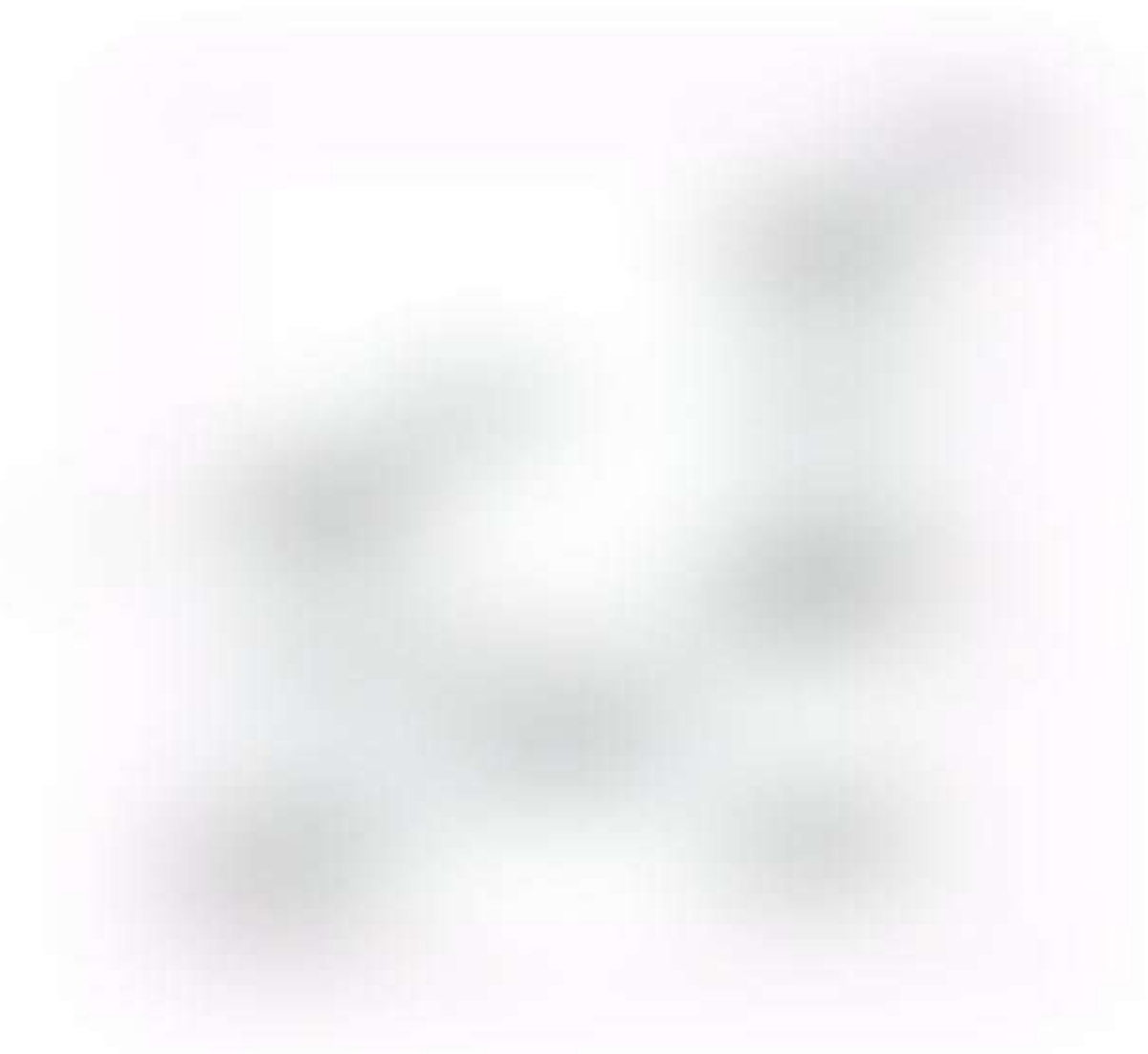




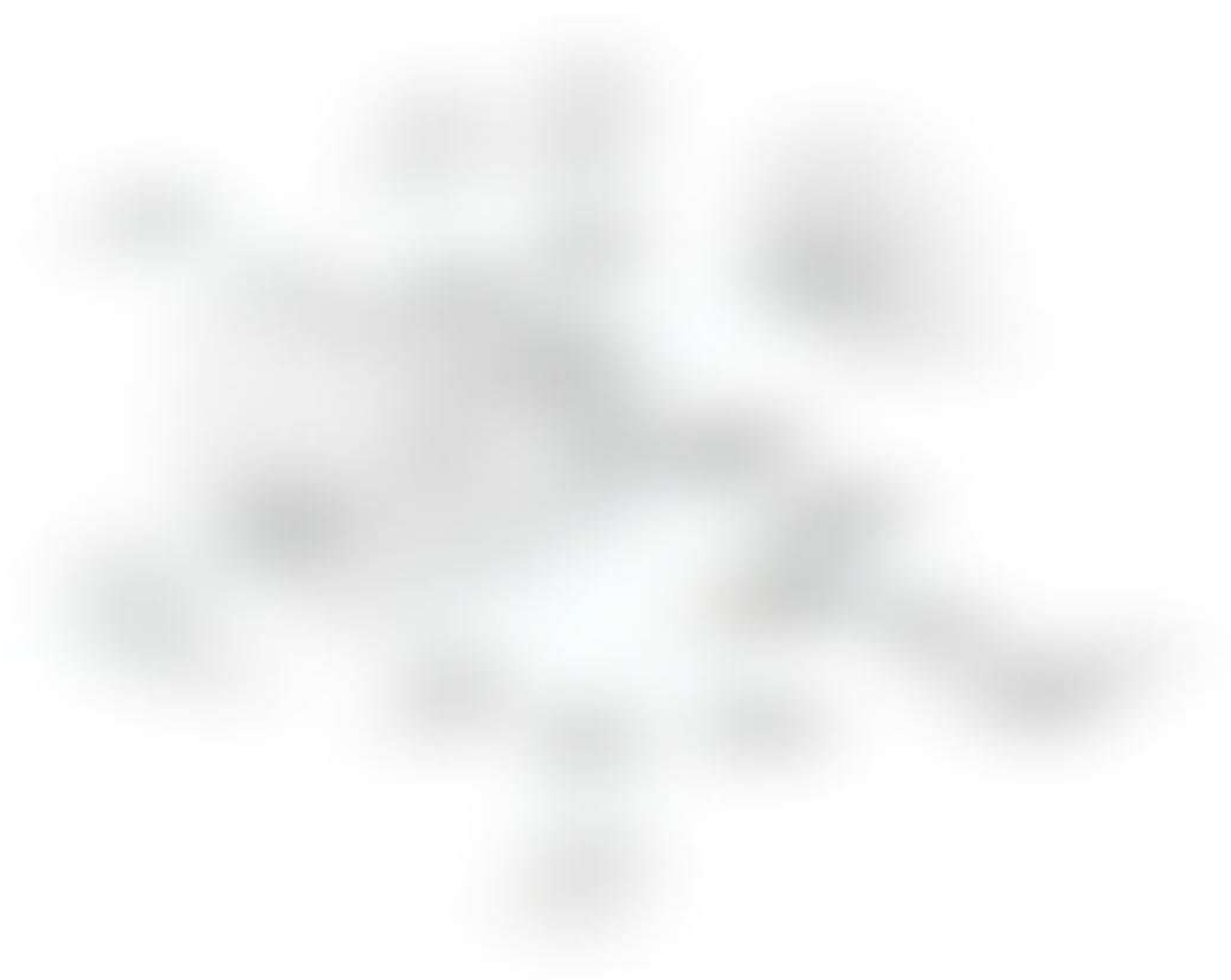
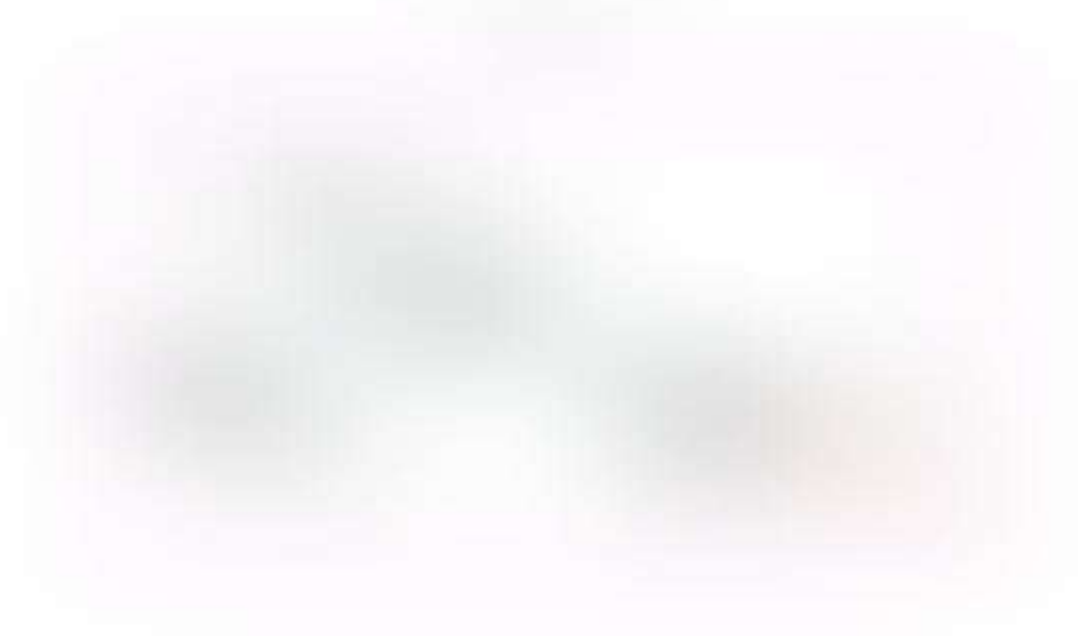
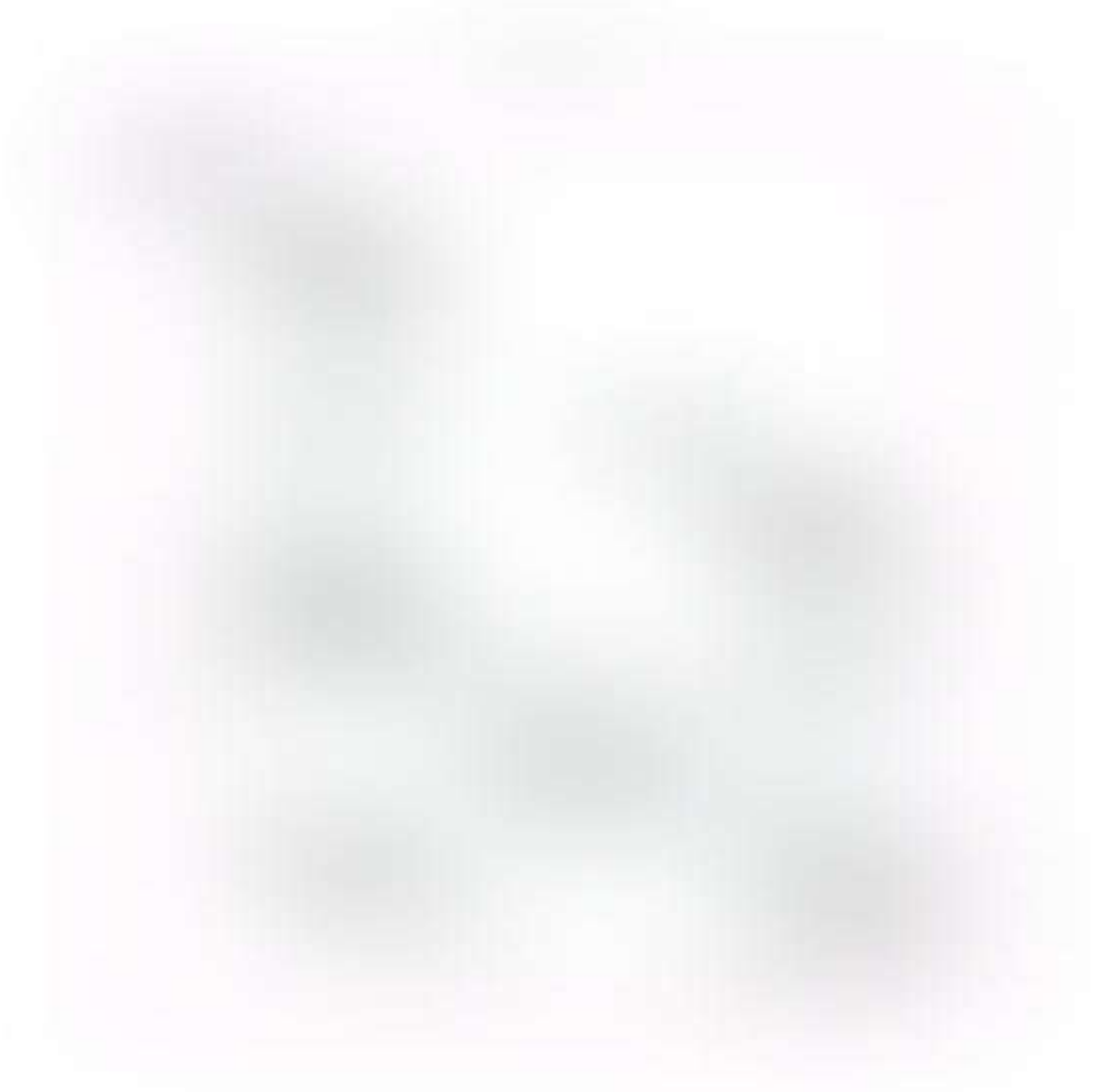








Item	Quantity	Unit	Material	Remarks
1	1	kg	Steel	
2	2	kg	Steel	
3	3	kg	Steel	
4	4	kg	Steel	
5	5	kg	Steel	
6	6	kg	Steel	
7	7	kg	Steel	
8	8	kg	Steel	
9	9	kg	Steel	
10	10	kg	Steel	
11	11	kg	Steel	
12	12	kg	Steel	
13	13	kg	Steel	
14	14	kg	Steel	
15	15	kg	Steel	
16	16	kg	Steel	
17	17	kg	Steel	
18	18	kg	Steel	
19	19	kg	Steel	
20	20	kg	Steel	
21	21	kg	Steel	
22	22	kg	Steel	
23	23	kg	Steel	
24	24	kg	Steel	
25	25	kg	Steel	
26	26	kg	Steel	
27	27	kg	Steel	
28	28	kg	Steel	
29	29	kg	Steel	
30	30	kg	Steel	
31	31	kg	Steel	
32	32	kg	Steel	
33	33	kg	Steel	
34	34	kg	Steel	
35	35	kg	Steel	
36	36	kg	Steel	
37	37	kg	Steel	
38	38	kg	Steel	
39	39	kg	Steel	
40	40	kg	Steel	
41	41	kg	Steel	
42	42	kg	Steel	
43	43	kg	Steel	
44	44	kg	Steel	
45	45	kg	Steel	
46	46	kg	Steel	
47	47	kg	Steel	
48	48	kg	Steel	
49	49	kg	Steel	
50	50	kg	Steel	
51	51	kg	Steel	
52	52	kg	Steel	
53	53	kg	Steel	
54	54	kg	Steel	
55	55	kg	Steel	
56	56	kg	Steel	
57	57	kg	Steel	
58	58	kg	Steel	
59	59	kg	Steel	
60	60	kg	Steel	
61	61	kg	Steel	
62	62	kg	Steel	
63	63	kg	Steel	
64	64	kg	Steel	
65	65	kg	Steel	
66	66	kg	Steel	
67	67	kg	Steel	
68	68	kg	Steel	
69	69	kg	Steel	
70	70	kg	Steel	
71	71	kg	Steel	
72	72	kg	Steel	
73	73	kg	Steel	
74	74	kg	Steel	
75	75	kg	Steel	
76	76	kg	Steel	
77	77	kg	Steel	
78	78	kg	Steel	
79	79	kg	Steel	
80	80	kg	Steel	
81	81	kg	Steel	
82	82	kg	Steel	
83	83	kg	Steel	
84	84	kg	Steel	
85	85	kg	Steel	
86	86	kg	Steel	
87	87	kg	Steel	
88	88	kg	Steel	
89	89	kg	Steel	
90	90	kg	Steel	
91	91	kg	Steel	
92	92	kg	Steel	
93	93	kg	Steel	
94	94	kg	Steel	
95	95	kg	Steel	
96	96	kg	Steel	
97	97	kg	Steel	
98	98	kg	Steel	
99	99	kg	Steel	
100	100	kg	Steel	



Item	Quantity	Unit	Material	Remarks
1	1	kg	Steel	
2	2	kg	Steel	
3	3	kg	Steel	
4	4	kg	Steel	
5	5	kg	Steel	
6	6	kg	Steel	
7	7	kg	Steel	
8	8	kg	Steel	
9	9	kg	Steel	
10	10	kg	Steel	
11	11	kg	Steel	
12	12	kg	Steel	
13	13	kg	Steel	
14	14	kg	Steel	
15	15	kg	Steel	
16	16	kg	Steel	
17	17	kg	Steel	
18	18	kg	Steel	
19	19	kg	Steel	
20	20	kg	Steel	
21	21	kg	Steel	
22	22	kg	Steel	
23	23	kg	Steel	
24	24	kg	Steel	
25	25	kg	Steel	
26	26	kg	Steel	
27	27	kg	Steel	
28	28	kg	Steel	
29	29	kg	Steel	
30	30	kg	Steel	
31	31	kg	Steel	
32	32	kg	Steel	
33	33	kg	Steel	
34	34	kg	Steel	
35	35	kg	Steel	
36	36	kg	Steel	
37	37	kg	Steel	
38	38	kg	Steel	
39	39	kg	Steel	
40	40	kg	Steel	
41	41	kg	Steel	
42	42	kg	Steel	
43	43	kg	Steel	
44	44	kg	Steel	
45	45	kg	Steel	
46	46	kg	Steel	
47	47	kg	Steel	
48	48	kg	Steel	
49	49	kg	Steel	
50	50	kg	Steel	
51	51	kg	Steel	
52	52	kg	Steel	
53	53	kg	Steel	
54	54	kg	Steel	
55	55	kg	Steel	
56	56	kg	Steel	
57	57	kg	Steel	
58	58	kg	Steel	
59	59	kg	Steel	
60	60	kg	Steel	
61	61	kg	Steel	
62	62	kg	Steel	
63	63	kg	Steel	
64	64	kg	Steel	
65	65	kg	Steel	
66	66	kg	Steel	
67	67	kg	Steel	
68	68	kg	Steel	
69	69	kg	Steel	
70	70	kg	Steel	
71	71	kg	Steel	
72	72	kg	Steel	
73	73	kg	Steel	
74	74	kg	Steel	
75	75	kg	Steel	
76	76	kg	Steel	
77	77	kg	Steel	
78	78	kg	Steel	
79	79	kg	Steel	
80	80	kg	Steel	
81	81	kg	Steel	
82	82	kg	Steel	
83	83	kg	Steel	
84	84	kg	Steel	
85	85	kg	Steel	
86	86	kg	Steel	
87	87	kg	Steel	
88	88	kg	Steel	
89	89	kg	Steel	
90	90	kg	Steel	
91	91	kg	Steel	
92	92	kg	Steel	
93	93	kg	Steel	
94	94	kg	Steel	
95	95	kg	Steel	
96	96	kg	Steel	
97	97	kg	Steel	
98	98	kg	Steel	
99	99	kg	Steel	
100	100	kg	Steel	















